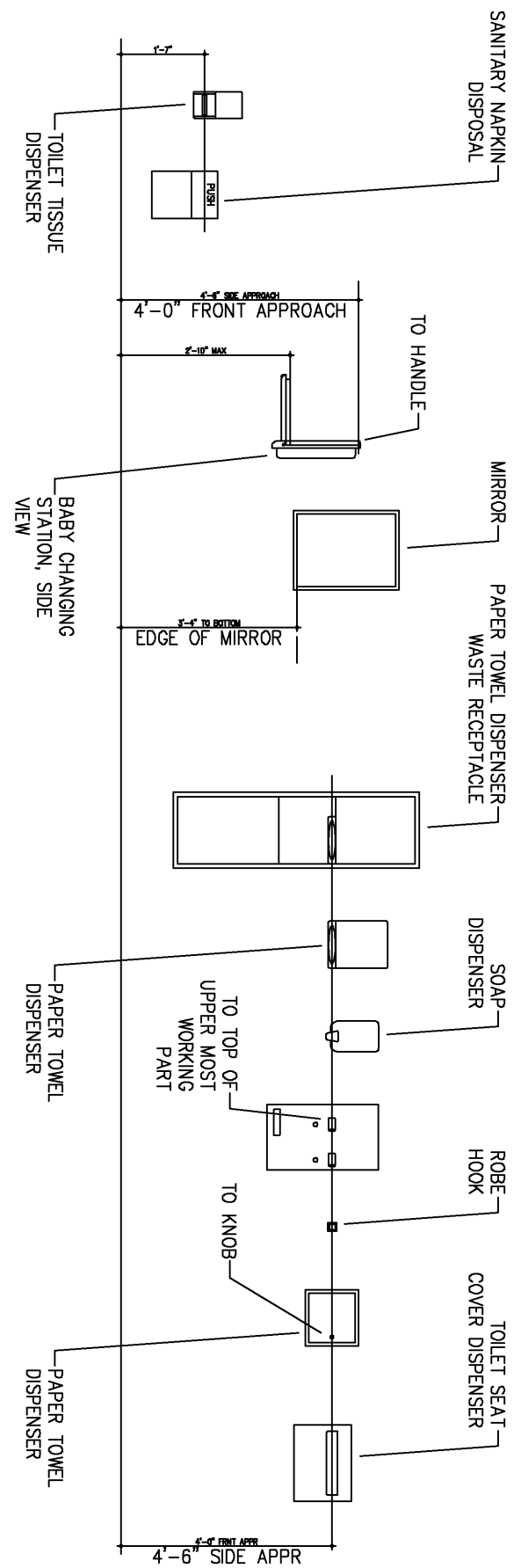
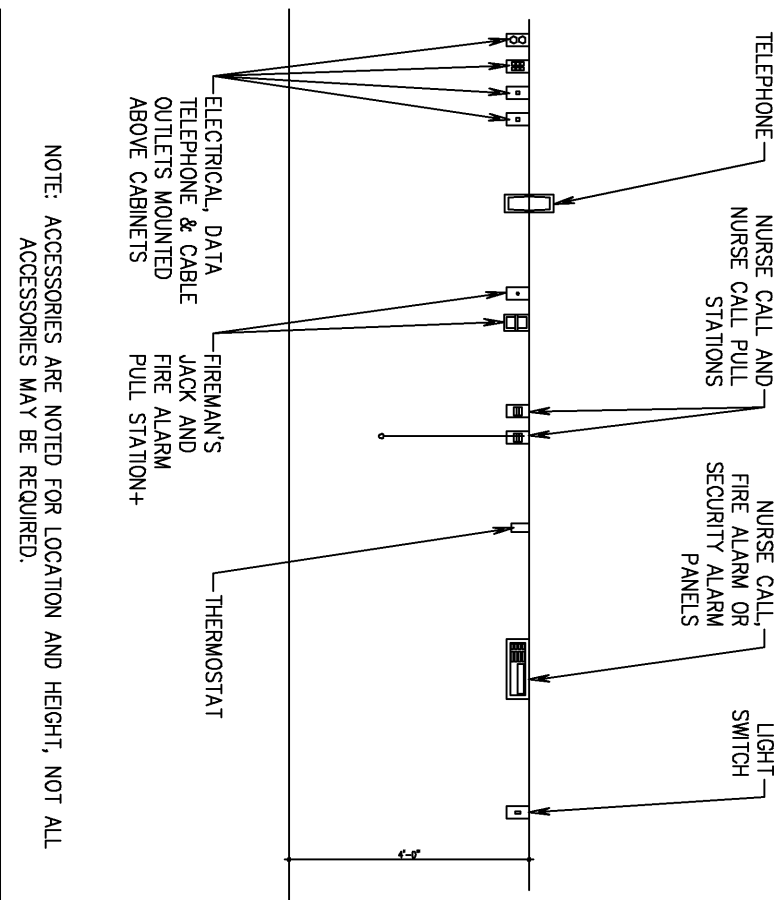
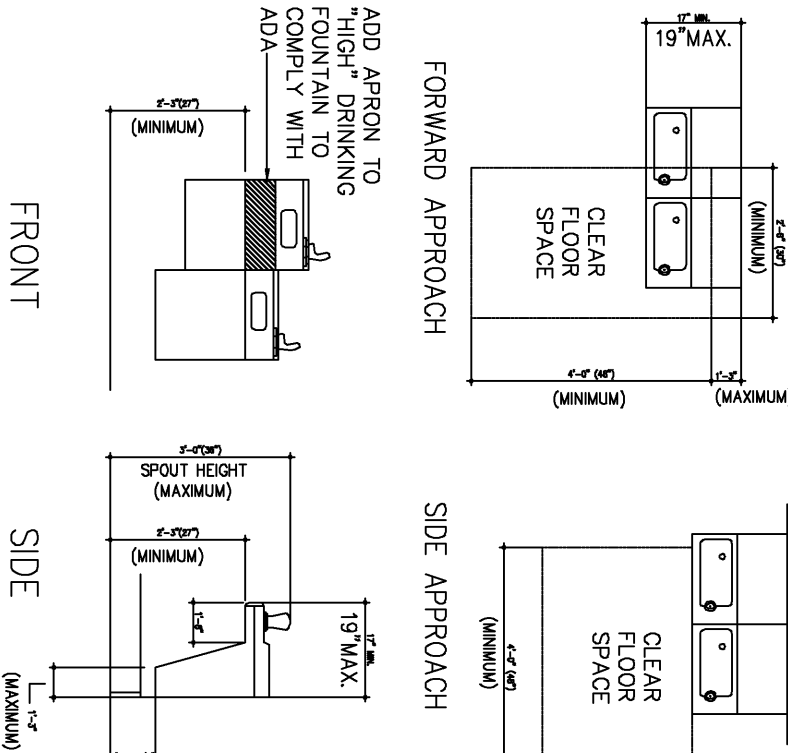
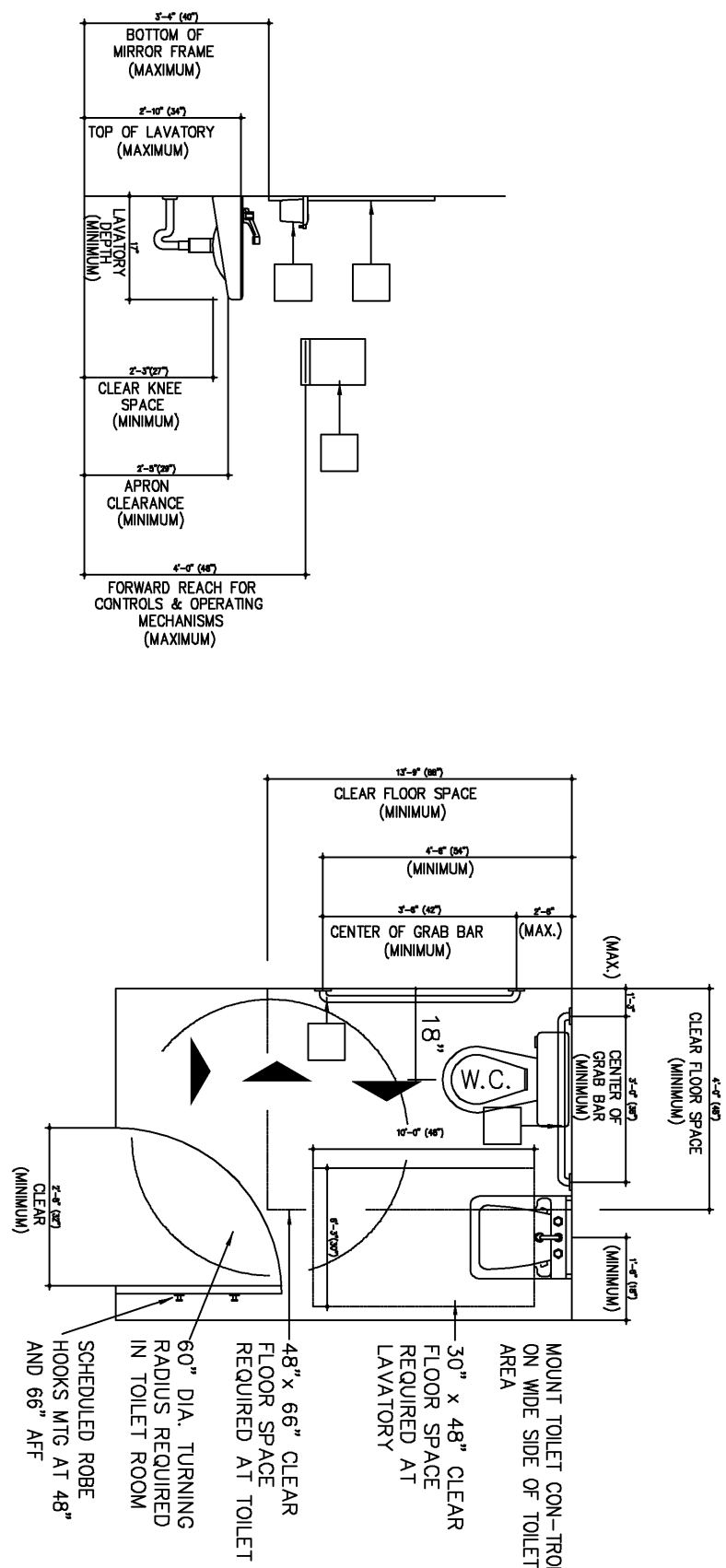


Demeris Barbecue

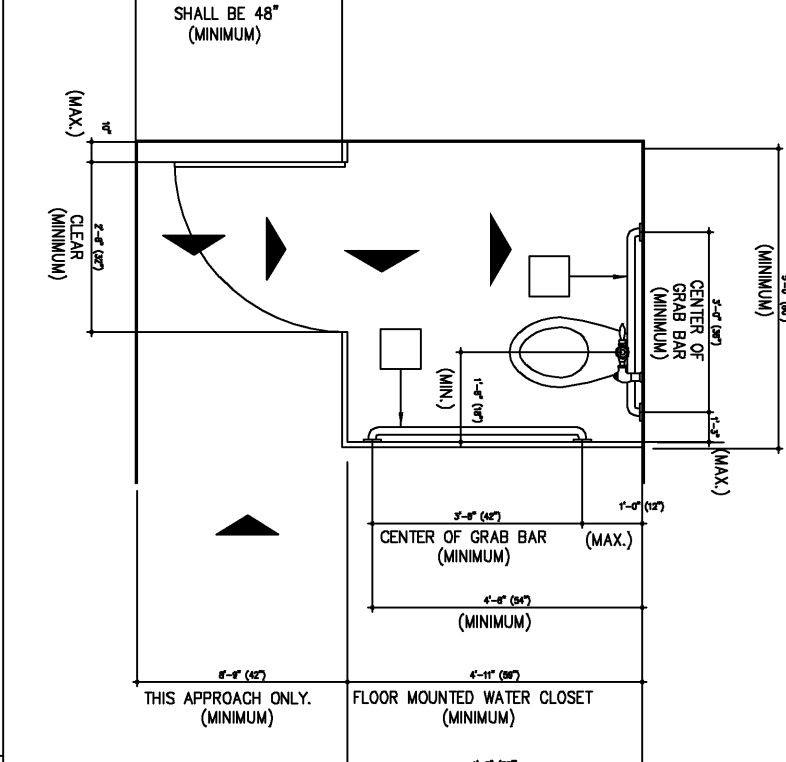
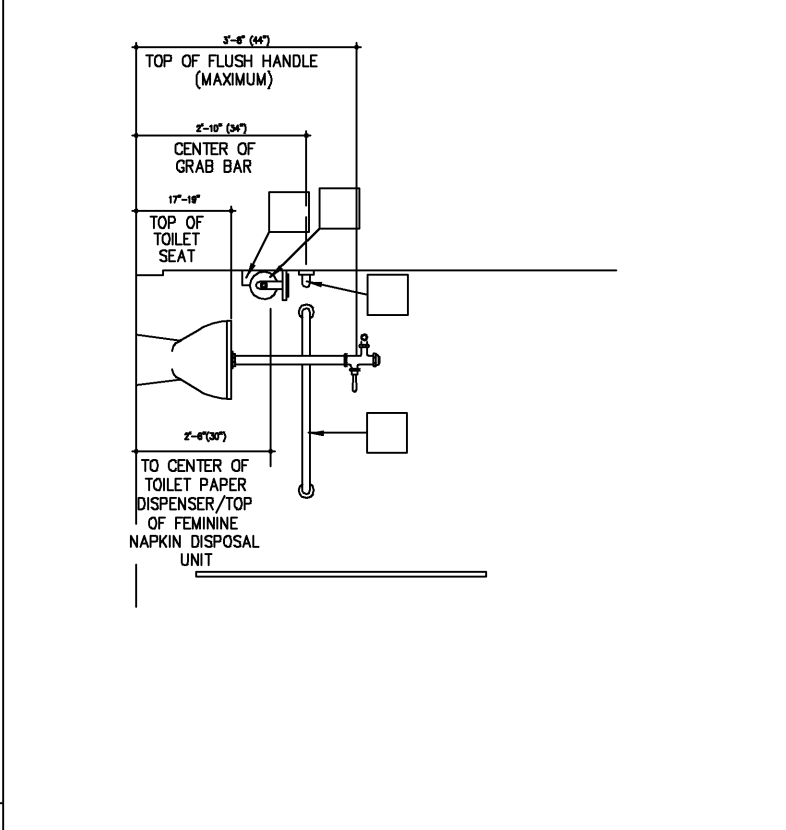
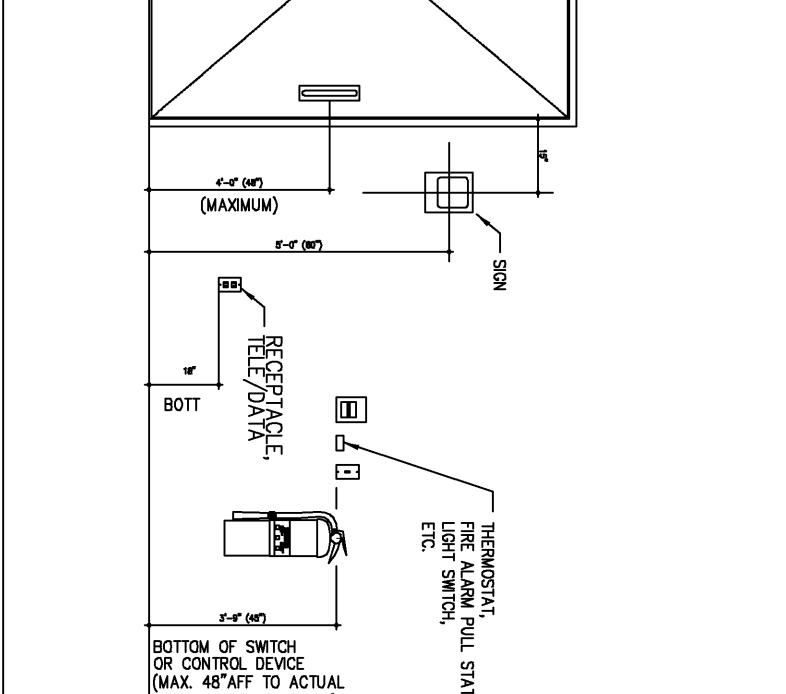
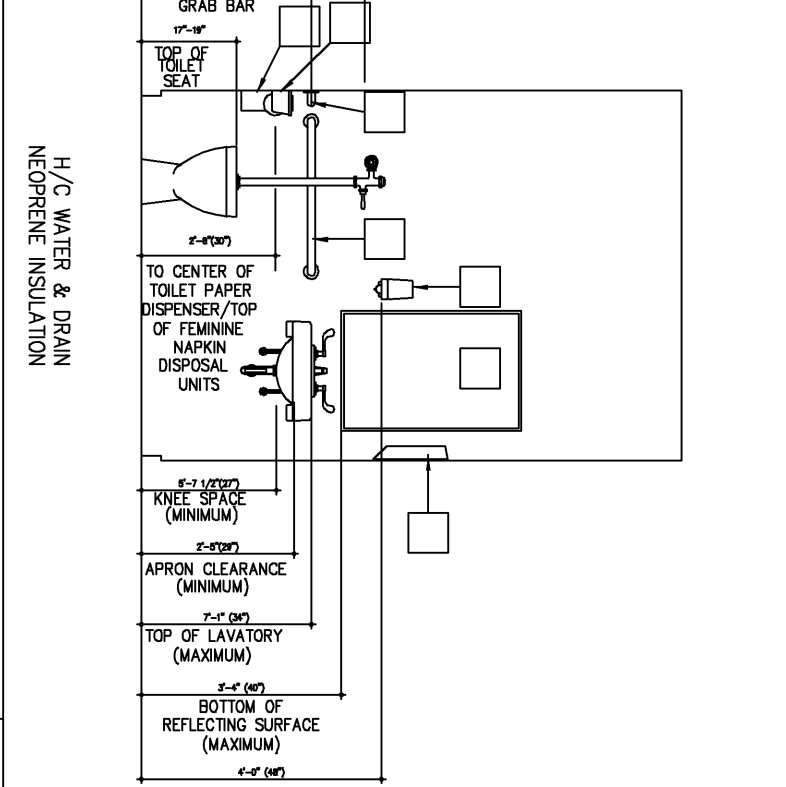
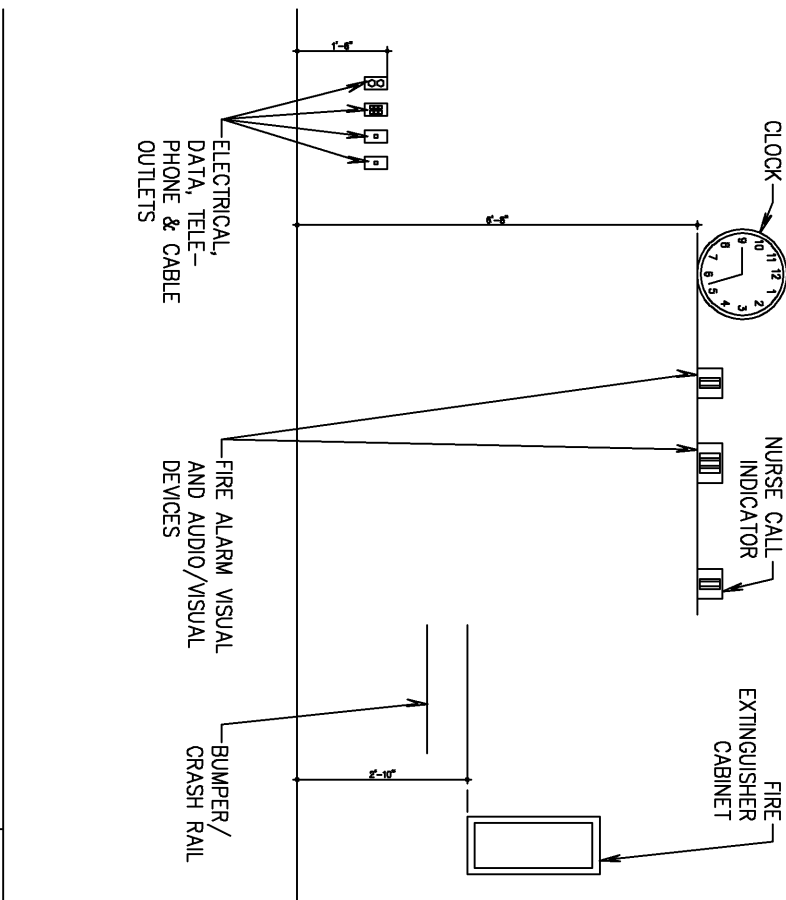
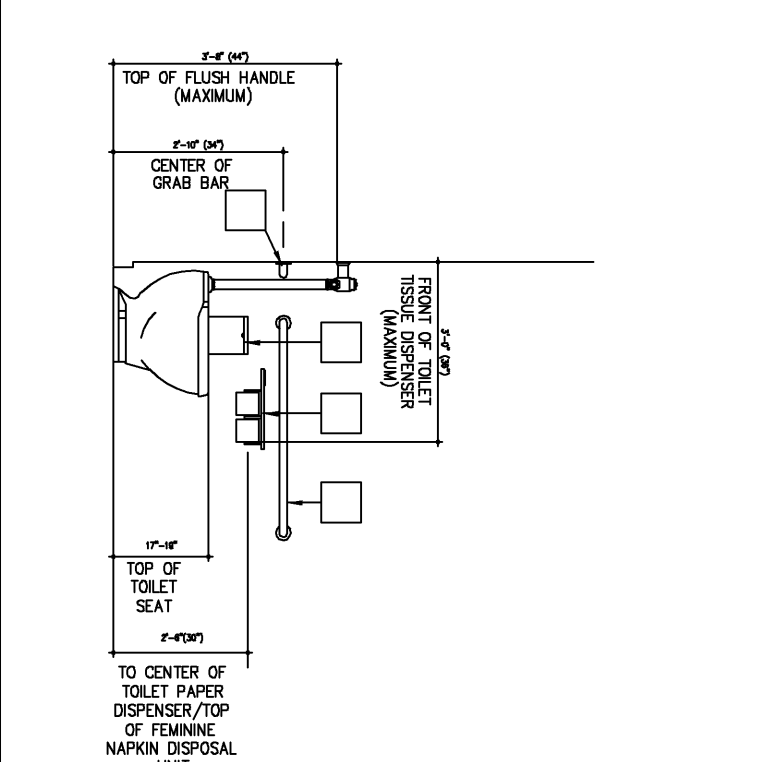
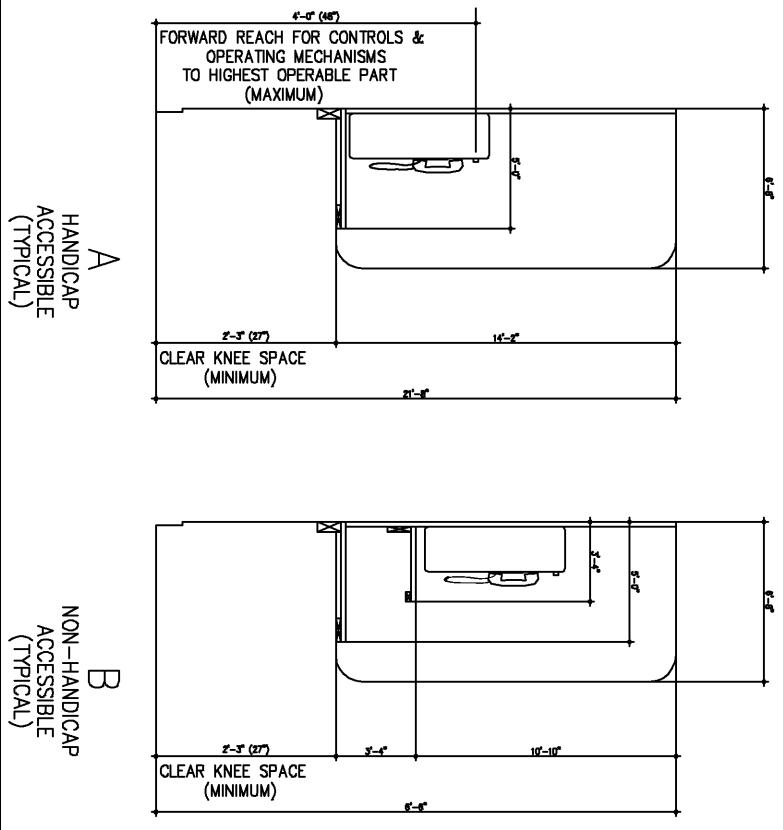
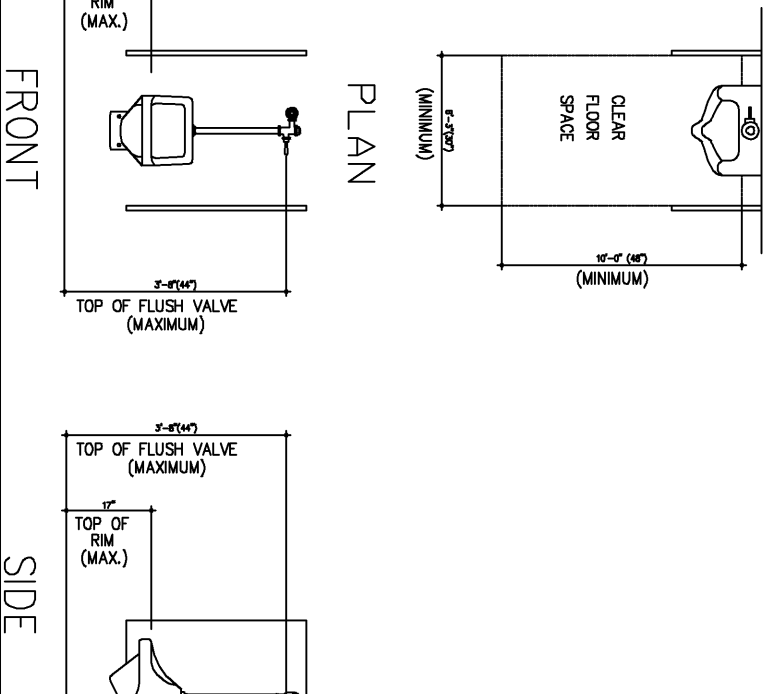
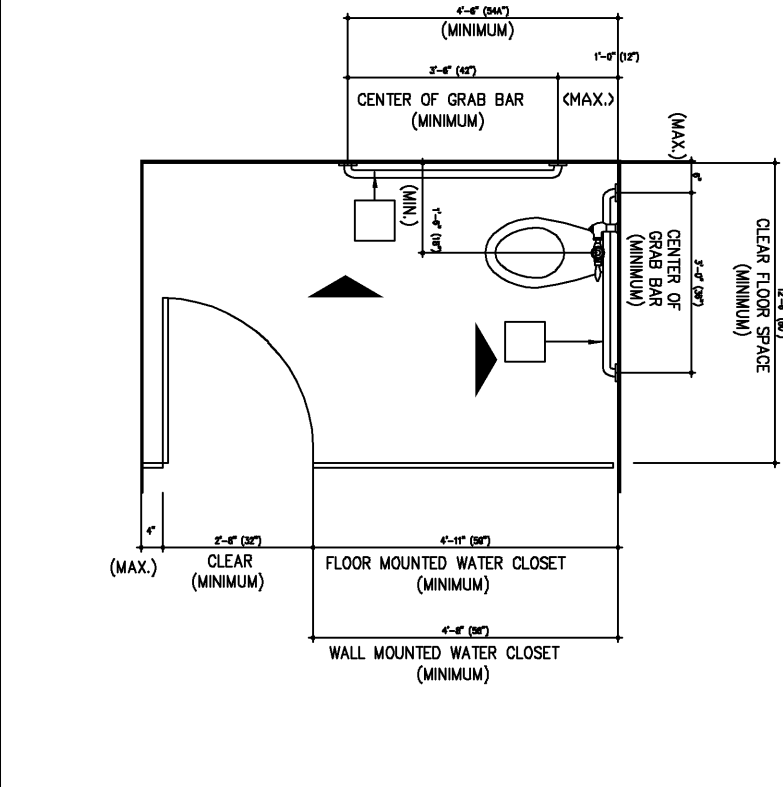
1702 West Loop North
Houston, Texas 77092



NOTE: ACCESSORIES ARE NOTED FOR LOCATION AND HEIGHT, SEE ACCESSORIES/REISSUES
LEGEND FOR TYPE. NOT ALL ACCESSORIES MAY BE REQUIRED.



NOTE: ACCESSORIES ARE NOTED FOR LOCATION AND HEIGHT, NOT ALL ACCESSORIES MAY BE REQUIRED.

[illegible][illegible]

GENERAL NOTES

A. TOILET ACCESSORIES ARE NOT SHOWN ON PLAN
VIEWS FOR CLARITY. SEE ELEVATIONS) FOR
ACCESSORY INFORMATION

NOTE: ALL TOILET ACCESSORIES SPECIFICATIONS TO BE:
"OR OWNER APPROVED EQUAL."

- 9 STAINLESS STEEL SINK, 6 1/2" DEEP (MAX.) WITH LEVER TYPE
Faucet Mechanism
- 8 LAVATORY-MOUNTED SOAP DISPENSER, BOBROCK, NO. B-822
- 7 SURFACE MOUNTED SOAP DISPENSER, BOBROCK, NO. B-155
- 6 SURFACE MOUNTED PAPER TOWEL DISPENSER, BOBROCK, NO. B-262
- 5 24" x 36" WARDROB, BOBROCK, NO. B-280 24/56
- 4 SANITARY FEATHER NAPKIN DISPOSAL UNIT, BOBROCK, NO. B-270
- 3 TOWEL TISSUE DISPENSER, BOBROCK, NO. B-284/60
- 2 GRAB BARS, BOBROCK, NO. B-6106/99 x 42
- 1 GRAB BARS, BOBROCK, NO. B-6106/99 x 36